





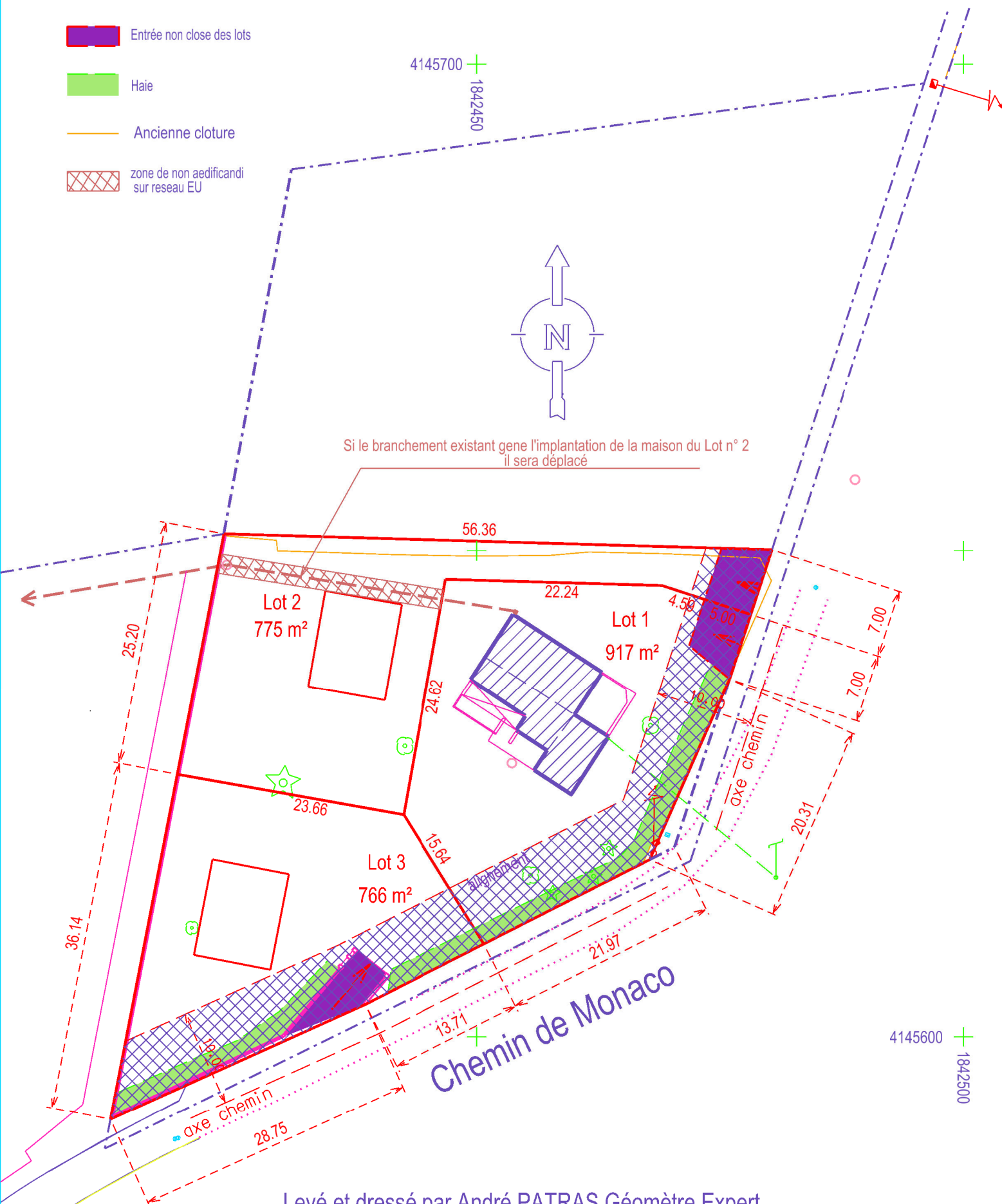


LEGENDE

-  Zone de non aedificandi
-  Périmètre du lotissement  
Limite de lot indicative
-  Entrée non close des lots
-  Haie
-  Ancienne clôture
-  zone de non aedificandi sur reseau EU

# PA 4 - Plan de Composition



Levé et dressé par André PATRAS Géomètre Expert  
 Coordonées Lambert 93 - CC45 -  
 Echelle : 1 / 500